



ADHESIVE
SHOWER
WALL SEALS

8/10/12 mm



ADHESIVE SHOWER WALL SEALS

CHARACTERISTICS OF THE BIADHESIVE TAPE

Biadhesive tape in transparent acrylic foam, 3M VHB™, dimensions 5x0.5 mm.

Resistance to peeling 2.1 N/mm (up to 90 °C)

100% of the seal after 72 hours. 90% of the seal after 24 hours. 50% of the seal after 20 minutes.

We suggest applying the Biadhesive tape to cold surfaces (at least 10 °C).

To increase adhesion, we suggest using a primer.

NOTES ON CORRECT USE

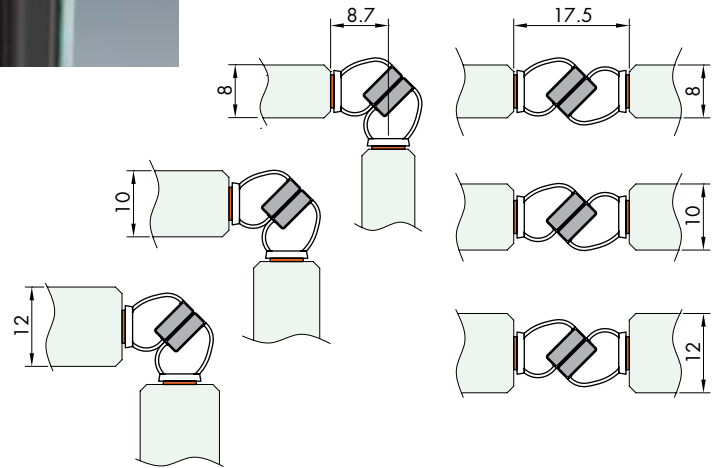
- Prepare the surfaces by cleaning with specific products.
- Remove the liner and apply the seal to the edge, being sure to keep it aligned and to press it down to start adhesion.





45° ADHESIVE MAGNETIC SEAL

Material: Rigid/plasticised coextruded PVC.
 Biadhesive tape in VHB transparent acrylic foam -
 Three-pole magnet.
 Maximum operating temperature 70 °C - High UV ray
 resistance.
 Finishes: transparent, black
 Minimum order 10 pcs also mixed

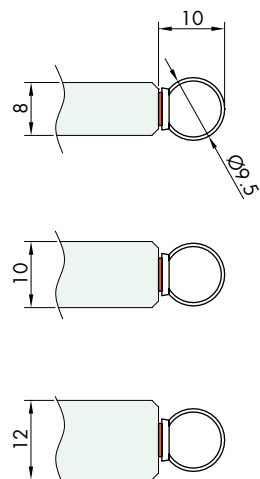


Art.	Dimensions	Glass	Finish	Q.ty
GMVHB1	L 2200 mm	8/12 mm	Transparent	1 Pair
GMVHB1NR	L 2200 mm	8/12 mm	Black	1 Pair
GMVHB13000	L 3000 mm	8/12 mm	Transparent	1 Pair
GMVHB13000NR	L 3000 mm	8/12 mm	Black	1 Pair



ADHESIVE BULB SEAL

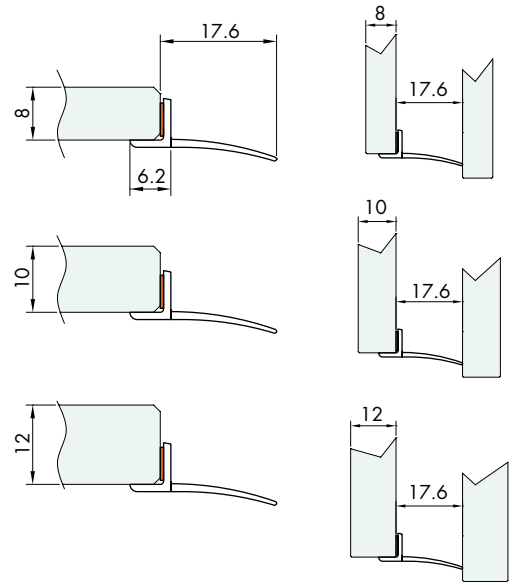
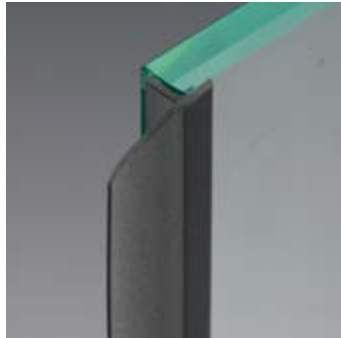
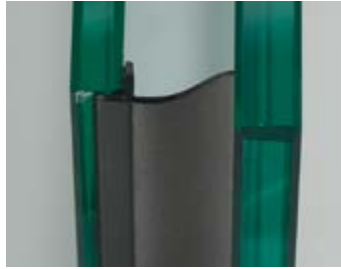
Material: Rigid/plasticised coextruded PVC.
 Biadhesive tape in VHB transparent acrylic foam.
 Maximum operating temperature 70 °C - High UV ray resistance.
 Finishes: transparent, black
 Minimum order 10 pcs also mixed



Art.	Dimensions	Glass	Finish	Q.ty
GMVHB4	L 2200 mm	8/12 mm	Transparent	1 Pc
GMVHB4NR	L 2200 mm	8/12 mm	Black	1 Pc
GMVHB43000	L 3000 mm	8/12 mm	Transparent	1 Pc
GMVHB43000NR	L 3000 mm	8/12 mm	Black	1 Pc

ADHESIVE SEAL WITH STRAIGHT FIN

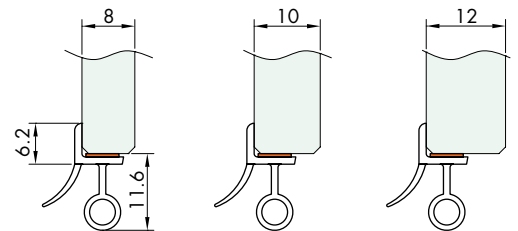
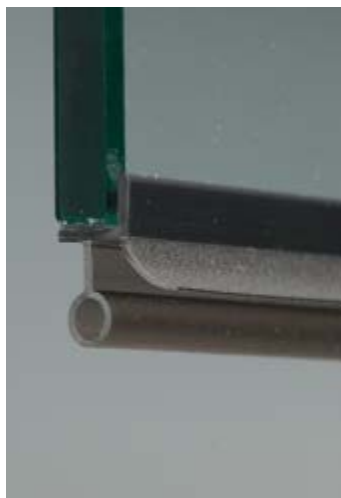
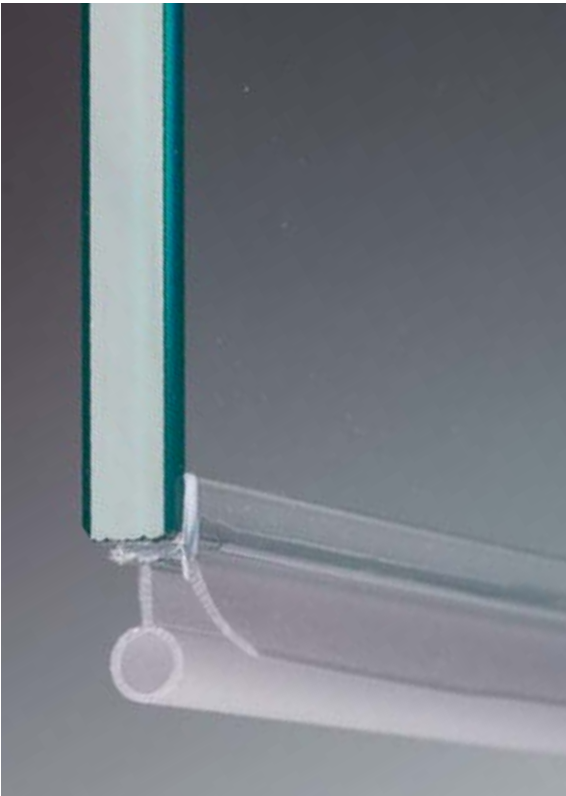
Material: Rigid/plasticised coextruded PVC.
 Biadhesive tape in VHB transparent acrylic foam.
 Maximum operating temperature 70 °C - High UV ray resistance.
 Finishes: transparent, black. Minimum order 10 pcs also mixed



Art.	Dimensions	Glass	Finish	Q.ty
GMVHB3	L 2200 mm	8/12 mm	Transparent	1 Pc
GMVHB3NR	L 2200 mm	8/12 mm	Black	1 Pc
GMVHB33000	L 3000 mm	8/12 mm	Transparent	1 Pc
GMVHB33000NR	L 3000 mm	8/12 mm	Black	1 Pc

ADHESIVE SEAL WITH WIPE AND DRIP RAIL

Material: Rigid/plasticised coextruded PVC.
 Biadhesive tape in VHB transparent acrylic foam.
 Maximum operating temperature 70 °C - High UV ray resistance.
 Finishes: transparent, black
 Minimum order 10 pcs also mixed



Art.	Dimensions	Glass	Finish	Q.ty
GMVHB2	L 2200 mm	8/12 mm	Transparent	1 Pc
GMVHB2NR	L 2200 mm	8/12 mm	Black	1 Pc



DEGREASING WIPE

Characteristics: Disposable wipe, soaked in isopropyl alcohol



Art.
GSLSVL

Q.ty
1 Pc



FIXGLASS 1000

Prepares surfaces for gluing

Product for cleaning glass to be glued. IT IS a concentrated alcohol-based solvent with concentration greater than 99% Cleans and degreases glass, metal, and marble. Equipped with ON/OFF nozzle.

PRODUCT WITHOUT EXPIRY

STORE IN A CLEAN AND SHADED PLACE.

WE SUGGEST USING TNT CLOTHS FOR APPLICATION

WARNING: WE SUGGEST USING GLOVES

PRODUCT FOR PROFESSIONAL USE



Art.
FX1000

Description

Prepares surfaces for gluing - 500 ml - Complete with spray nozzle

Q.ty
1 Pc



TNT CLOTH

Product for cleaning glass to be glued.
Doesn't leave residue on the surface.
Used with the FIXGLASS1000 products, it removes dirt, grease, without leaving marks



Art. FXTNT01	Description TNT Cloth for cleaning surfaces to be glued - 400 x 250 mm - 50 Pieces	Q.ty 1 Pack
------------------------	---	----------------



3M™ VHB SILANE GLASS PRIMER

Description: adhesion promoter, it contains silane to prepare the glass for VHB adhesive application.

Procedure:

- The surface to be treated must be clean, smooth and dry.
- Dampen a cloth with the primer.
- Apply the primer to the surface to be glued, being sure to pass the cloth over in one direction only.
- Dry the product with a clean and dry cloth, immediately after application.

Art. 3MSGP	Description Adhesion promoter - 1000 ml	Q.ty 1 Pc
----------------------	--	--------------

The images and information contained in this catalogue are to be considered indicative and may be subject to variations without prior notice



LOGLI MASSIMO SpA
Via Chemnitz, 49/51
59100 Prato - Italia
Tel. +39.0574.701035
Fax +39.0574.527574
www.loglimassimo.it
export@loglimassimo.it
info.lm@saint-gobain.com



SPONSOR



Fornitore Ufficiale

ASSOCIATED PARTNERS

